



**APPROVALS**




 **ENGINEERING CODE**  
643TAL804AA

 **APPROVED REFRIGERANT**  
R452A

 **POWER SUPPLY**  
220 - 240V 50Hz ~

 **STANDARD CONDITIONS**  
EN13215\_SH10

 **APPLICATION**  
LBP

 **COOLING CAPACITY**  
619 W

 **EFFICIENCY**  
0.75 W/W

DATA

### General Data

<b>Weight</b>	37.9 Kg
<b>Receiver</b>	2.3 L
<b>Height</b>	324 mm
<b>Length</b>	481 mm
<b>Width</b>	395 mm
<b>Power Supply</b>	220 - 240 V 50 Hz

### Electrical Data

<b>Motor Type</b>	CSR
<b>Locked Rotor Amperage (LRA)</b>	36 A
<b>Max Current</b>	6.5 A

## Spare Parts

Condenser	3R12T	2451140
Fan Kit	34W 275/31/5B	1996583
Valve Discharge	SOLDER 3/8"	2110049
Valve Suction	SOLDER 5/8"	2110054
Dryer	FILTER DRYER 3/8" SAE	2730016
Sight Glass	SIGHT GLASS 3/8" SAE	2464232
Compressor	NJ2212GK	943DA19..AC
Electrical Kit	ELKOM NJ2212GK	943DA1904A

## Noise Data

Sound Power Level	71.3 dB (A)	-	-
Sound Pressure Level	at 1 m	at 5 m	at 10 m
	63.3 dB (A)	49.3 dB (A)	43.3 dB (A)

## Fan Motor

Number	1
Shaft Power	34 W
Air Flow	800 m <sup>3</sup> /h
Blade diameter	275 mm

## PERFORMANCE

## Rated Points

Ambient Temperature	Cooling Capacity	Power Consumption	Current	Efficiency
32.00°C	619 W	828 W	4.56 A	0.75 W/W

Test Condition EN13215\_SH10: Evaporating temp. -35.00°C, Ambient temp. 32.00°C, Return Gas 0 °C, Subcooling 3K , Superheating 10K

## Performance Curve Data

### Ambient Temperature 25°C

Evaporating Temperature °C	Cooling Capacity W	Power Consumption W	Current A	Efficiency W/W
-40	575	739	4.22	0.78
-35	795	853	4.68	0.93
-30	1043	983	5.22	1.06
-25	1319	1131	5.86	1.17
-20	1623	1299	6.59	1.25
-15	1957	1486	7.44	1.32
-10	2320	1695	8.39	1.37

Test Condition EN13215\_SH10: Evaporating temp. -35.00°C, Ambient temp. 25.00°C, Return Gas 0 °C, Subcooling 3K , Superheating 10K

### Ambient Temperature 32°C

Evaporating Temperature °C	Cooling Capacity W	Power Consumption W	Current A	Efficiency W/W
-40	426	700	4.06	0.61
-35	619	828	4.56	0.75
-30	841	973	5.16	0.86
-25	1090	1135	5.85	0.96
-20	1368	1316	6.66	1.04
-15	1675	1518	7.58	1.1
-10	2012	1741	8.62	1.16

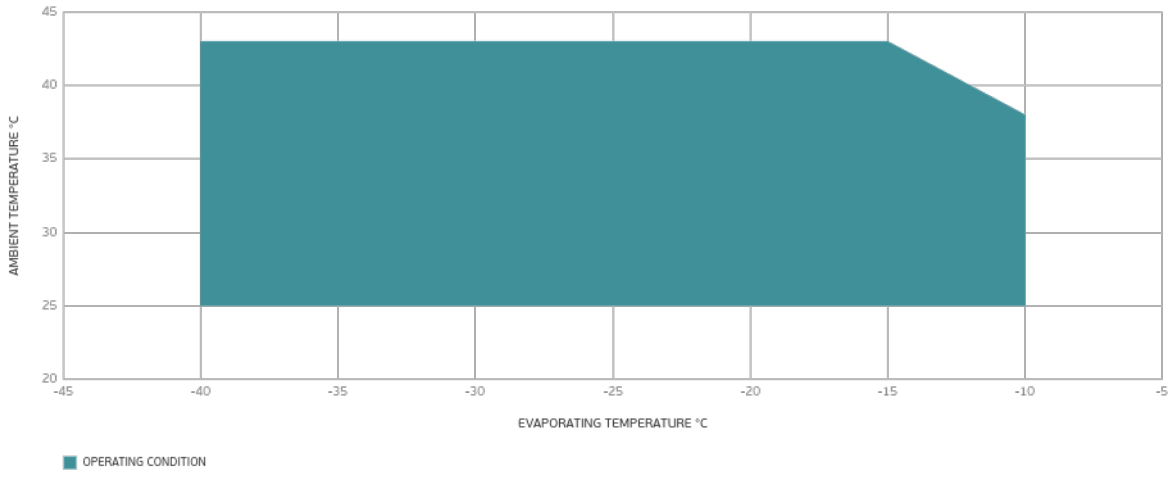
Test Condition EN13215\_SH10: Evaporating temp. -35.00°C, Ambient temp. 32.00°C, Return Gas 0 °C, Subcooling 3K , Superheating 10K

### Ambient Temperature 43°C

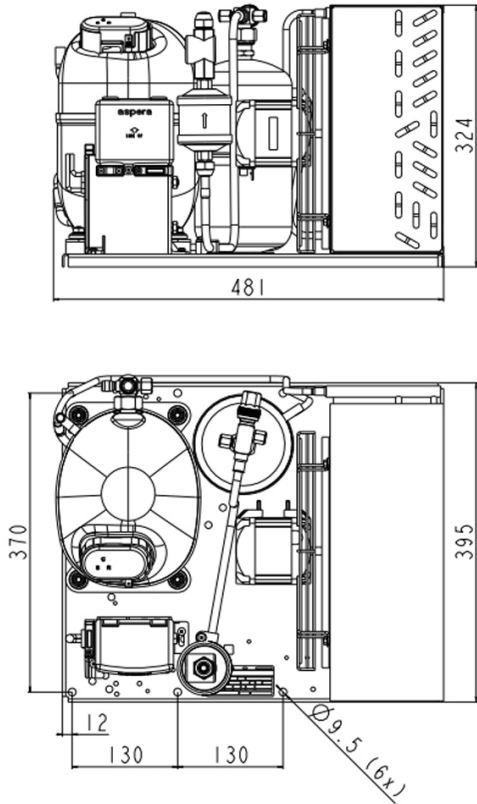
Evaporating Temperature °C	Cooling Capacity W	Power Consumption W	Current A	Efficiency W/W
-40	280	671	4.02	0.42
-35	440	815	4.54	0.54
-30	628	975	5.18	0.64
-25	845	1153	5.93	0.73
-20	1090	1350	6.8	0.81
-15	1364	1566	7.8	0.87
-10	1668	1805	8.94	0.92

Test Condition EN13215\_SH10: Evaporating temp. -35.00°C, Ambient temp. 43.00°C, Return Gas 0 °C, Subcooling 3K , Superheating 10K

## Operating Envelope



## External Dimensions



## Wiring Diagram

